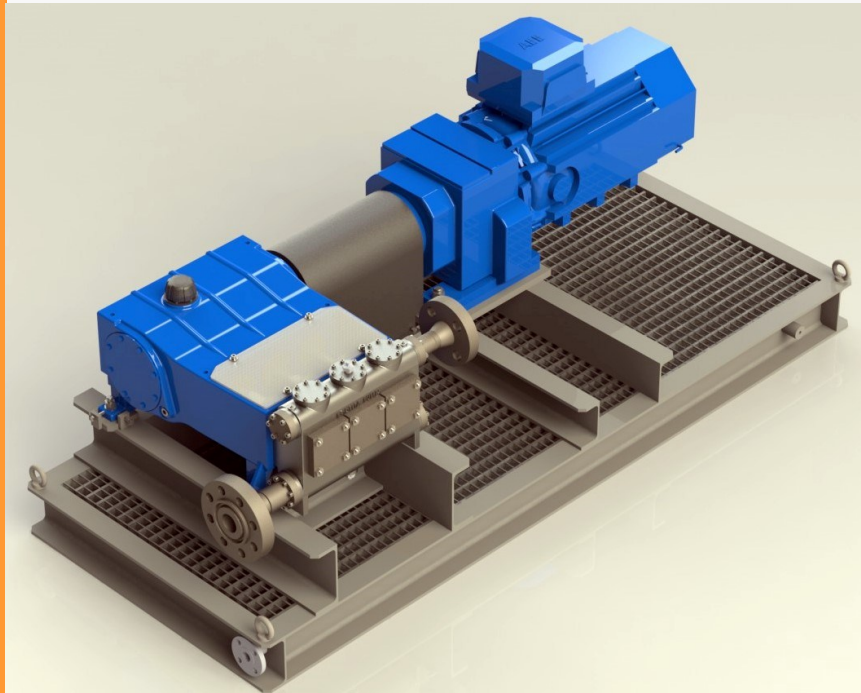


**RODELTA**  
PUMPS INTERNATIONAL



The power of proven technology

PLR

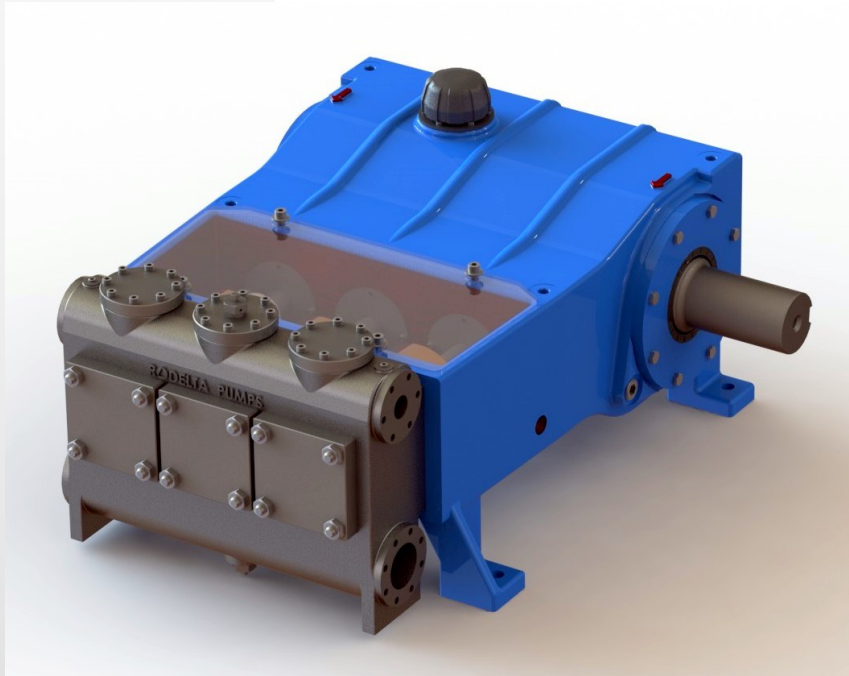


**Triplex Reciprocating  
Plunger Pump  
API 674 (ISO 13710)**

## General Design Description

▲ The plunger pumps are designed in accordance with the latest revision of API674 and ISO13710.

▲ The PLR range is a series of triplex reciprocating plunger pumps, suitable for handling most liquids for the oil & gas and offshore markets.



▲ Maximum Discharge Pressure 1000 bar  
▲ Maximum Flow 73 m<sup>3</sup>/hr  
▲ Maximum Speed 450 rpm  
▲ Working Temperatures -40°C to +200°C

▲ A wide range of drive systems available, including:

▲ Gearbox  
▲ V-belt  
▲ Hydraulic

All with the option of overhead mounted motors for a compact footprint and Variable Speed Drives.

## Applications

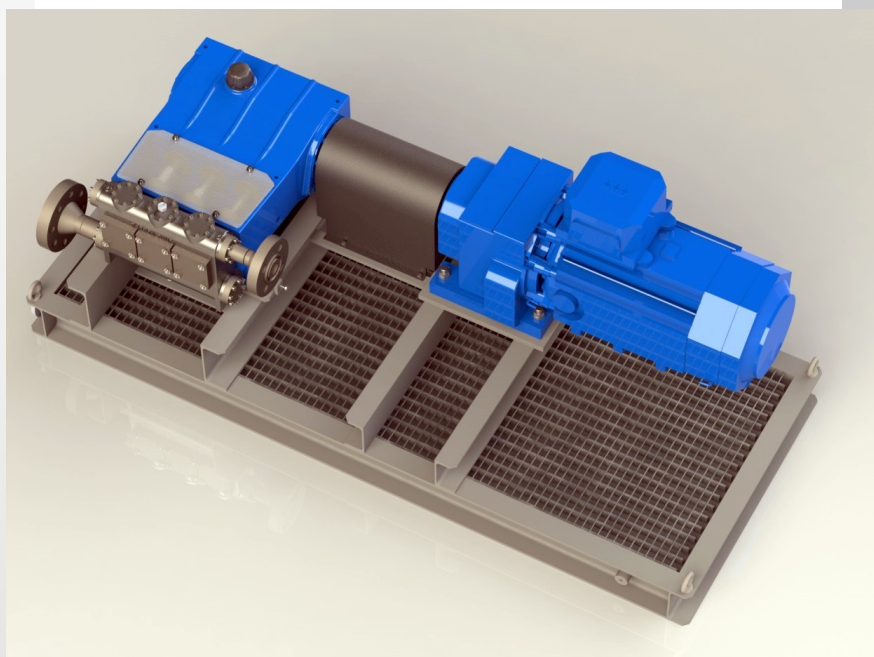


- ▲ Methanol Injection
- ▲ Glycol Circulation
- ▲ Reverse Osmosis
- ▲ Water Treatment
- ▲ Water Production
- ▲ Water Jetting
- ▲ Boiler Feed
- ▲ De-scaling
- ▲ Hydrocarbon  
Condensate
- ▲ Closed Drains Pumps
- ▲ Slops Injection

## Features and Benefits

### Pump Performance

- ▲ Easy to maintain
- ▲ Low noise to meet latest international regulations
- ▲ ATEX compliance for non-electrical machinery EN13463:1:2001
- ▲ Multiple sealing systems available
- ▲ Engineered to meet exact client specifications



### Material Options

Standard materials include:

- ▲ Carbon Steel ASTM A216WCB
- ▲ Stainless Steel 316
- ▲ Duplex Alloy UNS31803
- ▲ Inconel 625
- ▲ Aluminium Bronze

Other materials available on request

### Pump Power Frame

- ▲ Crankshaft in high tensile steel with drive extension available from either side of power frame.
- ▲ Heavy duty taper roller main bearings rated for continuous duty at maximum design load.

### Base Plate

- ▲ All base plates uniquely engineered to client specifications including API 674, incorporating features such as machined mounting pads, jacking screws, drip trays, flanged ports and grating.

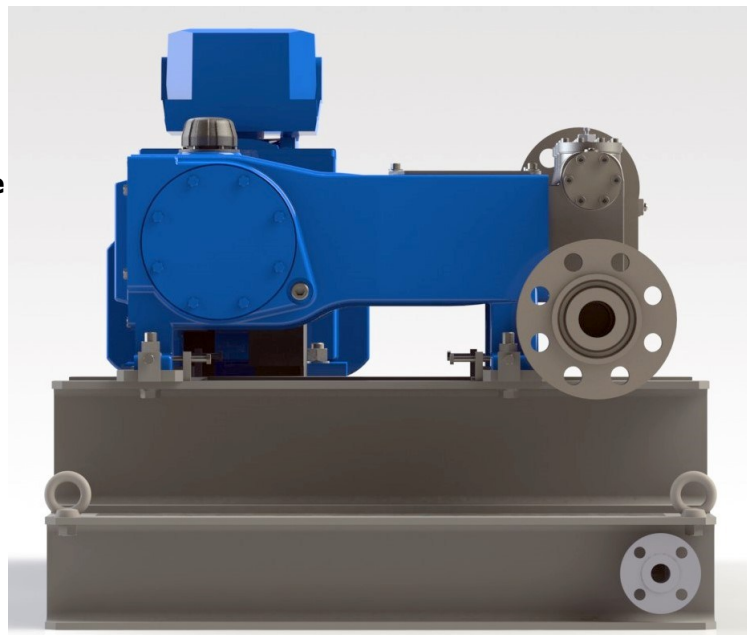
## Features and benefits

### Pump Liquid End

- ▲ Suction and discharge flanges to suit customers preferred rating and sizes
- ▲ Handing of flanges to suit customers pipe work
- ▲ Lightweight disc valves used for low suction pressure/NPSH duty conditions
- ▲ Polyurethane inserted stainless steel valves for highly abrasive duty applications
- ▲ Two piece plunger and cross head extension assembly for easy maintenance and in-situ seal change out
- ▲ Plungers fully interchangeable to facilitate future up-rating of pump at minimum cost
- ▲ Plunger packing easily replaced without the need to remove the fluid end or disconnection from piping system

### Easy and low cost maintenance

- ▲ Fluid head servicing and seal changes carried out without head removal



### Oil Lubrication

- ▲ IP rated breather/filling plug on top
- ▲ Oil bath
- ▲ Oil sight glass
- ▲ Splash & submerge standard for power end with pressurised as an option

### Technical Data

- ▲ Maximum Discharge Pressure 1000 bar
- ▲ Maximum Flow 73 m<sup>3</sup>/hr
- ▲ Maximum Speed 450 rpm
- ▲ Working Temperatures -40°C to +200°C

## Materials of Construction fully according to API 674

### ▲ Material Executions

Description	Materials
Crankcase	Cast SG Iron ASTM A218
Crankshaft	High Strength Steel
Plungers	Surface Hardened Steel/Ceramic
Fluid head	Carbon Steel ASTM A216WCB, Stainless Steel 316, Duplex Alloy UNS31803, Inconel 625,
Packing and seals	Per client project specifications

- ▲ Rodelta Pumps International BV is a leading multinational producer of API pumps. We have been supplying pumps to numerous industries for more than 60 years. Our head office is based in Hengelo, The Netherlands, where both our sales and production site is located, with a subsidiary sales office in the UK.

### **Rodelta's greatest strength is it's proven technology since 1946**

Rodelta Pumps International BV is an ISO 9001:2008 registered company

#### ▲ Rodelta Pumps International

Enschedeestraat 234  
7552 CM Hengelo  
PO Box 650, 7550 AR Hengelo  
The Netherlands

Phone +31 (0)74 2455200  
Fax +31 (0)74 2455201  
Email: [info@rodelta.com](mailto:info@rodelta.com)

#### ▲ Rodelta Pumps UK Ltd

Adur Business Centre, Little High Street  
Shoreham-by-Sea, West Sussex  
BN43 5EG  
United Kingdom

Phone +44 (0)1273 467586  
Skype:rodeltauK  
Email: [salesuk@rodelta.com](mailto:salesuk@rodelta.com)

▲ [www.rodelta.com](http://www.rodelta.com)